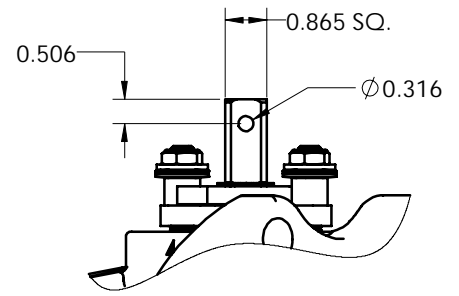
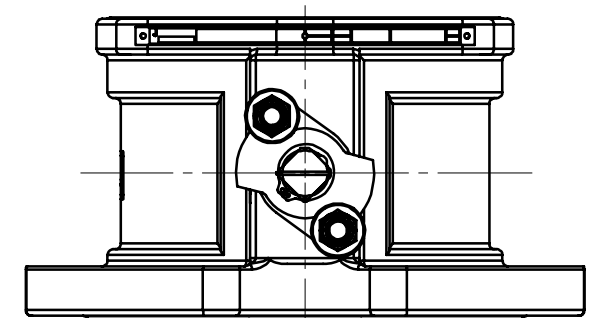
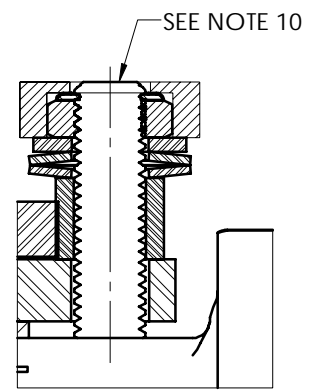


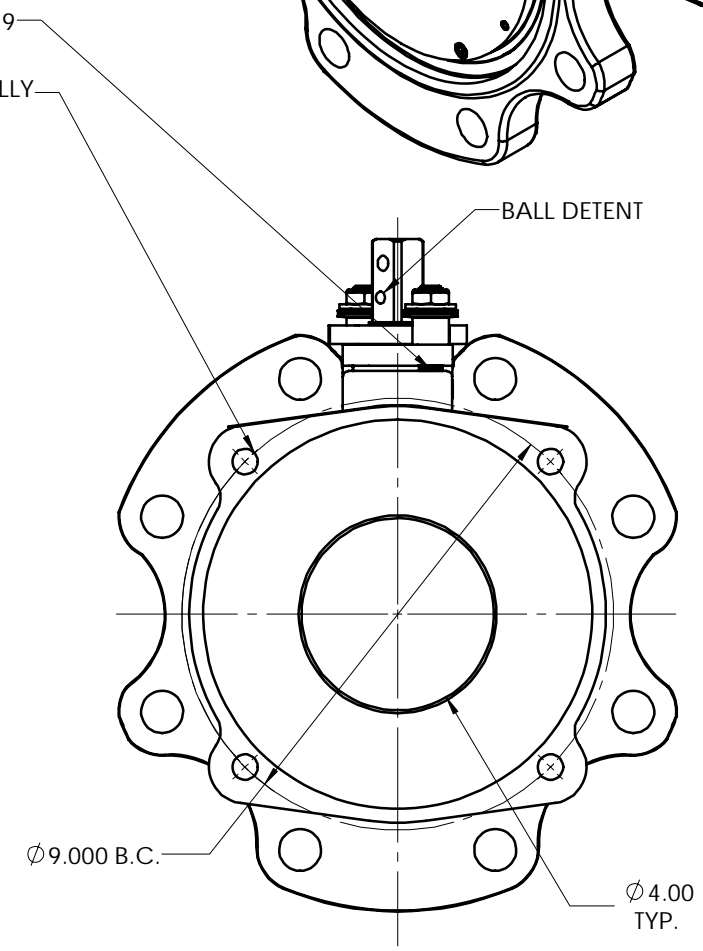
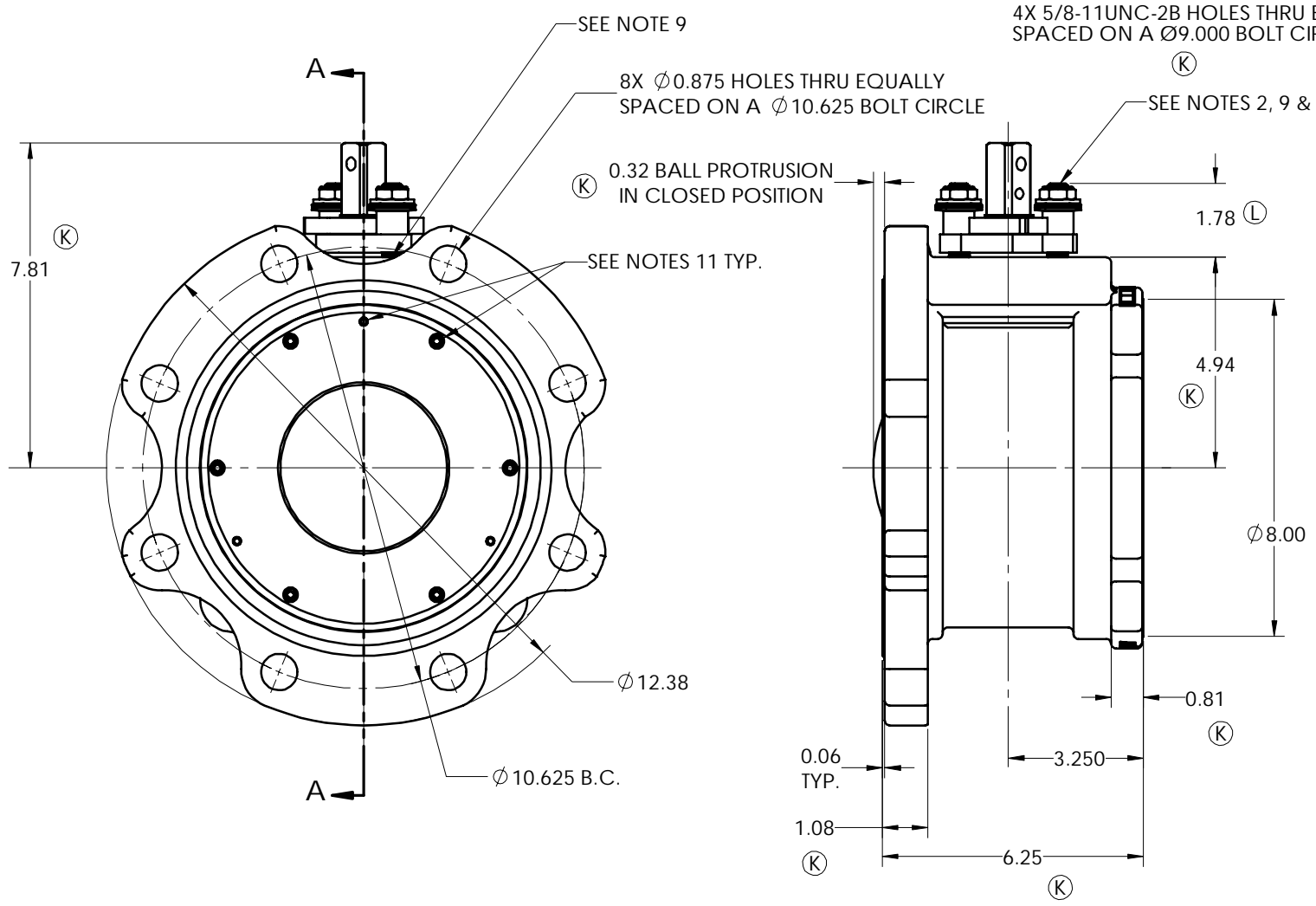
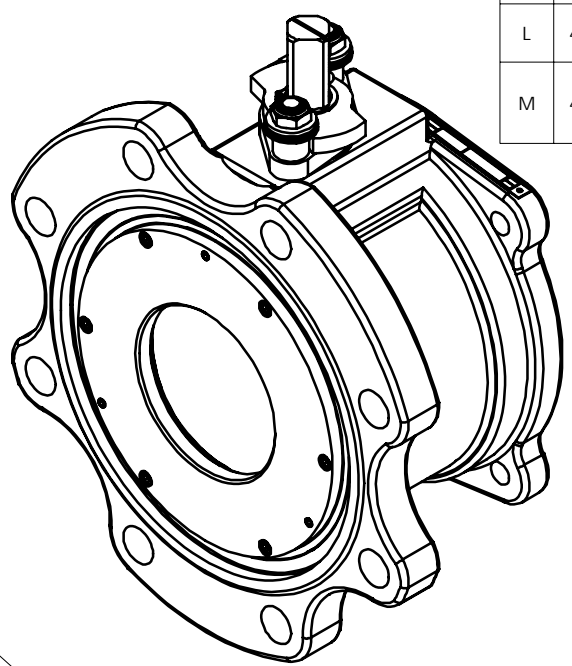
LET	ECN	REVISION	DRAWN	APPROVED	DATE
J	42347	REDRAWN IN SOLIDWORKS. ADDED STEAM JACKET AND COUPLINGS TO VIEWS	BC	WP	11/03/14
K	42735	SEE ECN FOR CHANGES	JPN	WP	01/19/15
L	43563	STUD HEIGHT 1.78 WAS 1.81	PJD	WP	3/31/16
M	43673	ADDED ITEM 78 STEAM JACKET RATING TAG. CHANGED QTY OF ITEM 26 FROM 3 TO 5. ONLY ON STEAM JACKETED VALVE.	PJD	WP	6/2/16



AUXILIARY B



REQUIRED FASTENER TORQUE
INSERT CAP SCREW
23 IN. LBS.



NOTES

- FOR INSTALLATION, MAINTENANCE AND OPERATING INSTRUCTIONS, SEE IMO-R20.
- WHERE IDENTIFICATION APPEARS ON STUD END, ASSEMBLE WITH IDENTIFICATION ALWAYS VISIBLE.
-
- TAG ATTACHMENT PER JMA-126.
- HANDLE AND HANDLE PIN WILL BE SUPPLIED ONLY ON REQUEST. HANDLE PART NUMBER 012-0535-22 HANDLE PIN PART NUMBER 010-0092-41.
- TIGHTEN BONNET NUT UNTIL DISC SPRINGS ARE VISUALLY FLAT.
- FOR BARRIER SEAT ASSEMBLY, SEE DWG I-1552.
- FOR "FO" WORD MODIFIER ASSEMBLY, SEE DWG I-1699.
- APPLY LOCKTITE 271 TO GLAND STUDS WHEN INSTALLING INTO THE BODY. APPLIES TO BOTH VERSIONS, WITH STEAM JACKET AND WITHOUT.
- WHEN THE GLAND NUTS ARE BEING TIGHTENED DOWN, USE GAGE T069766 TO ENSURE EVEN PACKING COMPRESSION AND LEVEL COMPRESSION PLATE. THE TOP OF THE STUD SHOULD BE FLUSH WITH THE TOP OF THE GAGE.
- LIBERALLY APPLY DOW CORNING 111 LUBRICANT AND SEALANT, OR EQUIVALENT, TO THE SOCKET HEAD CAP SCREW (73) AND SET SCREWS (72) THREADS. INSTALL THE INSERT BY THREADING THE LUBRICATED SCREWS INTO THE BODY AND INSERT. WIPE AWAY EXCESS LUBRICANT FROM THE INSERT FACE. TEST AND PREPARE THE VALVE PER JST-02 APPENDIX A.

STEAM JACKET NOT SHOWN

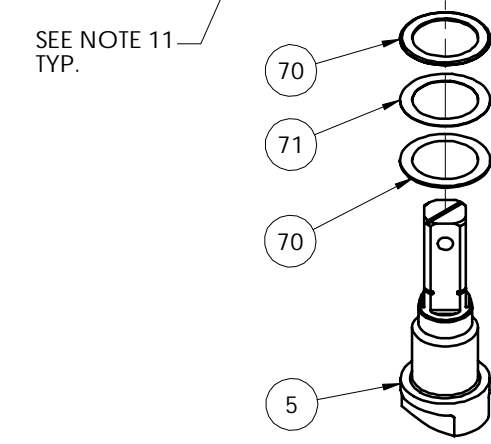
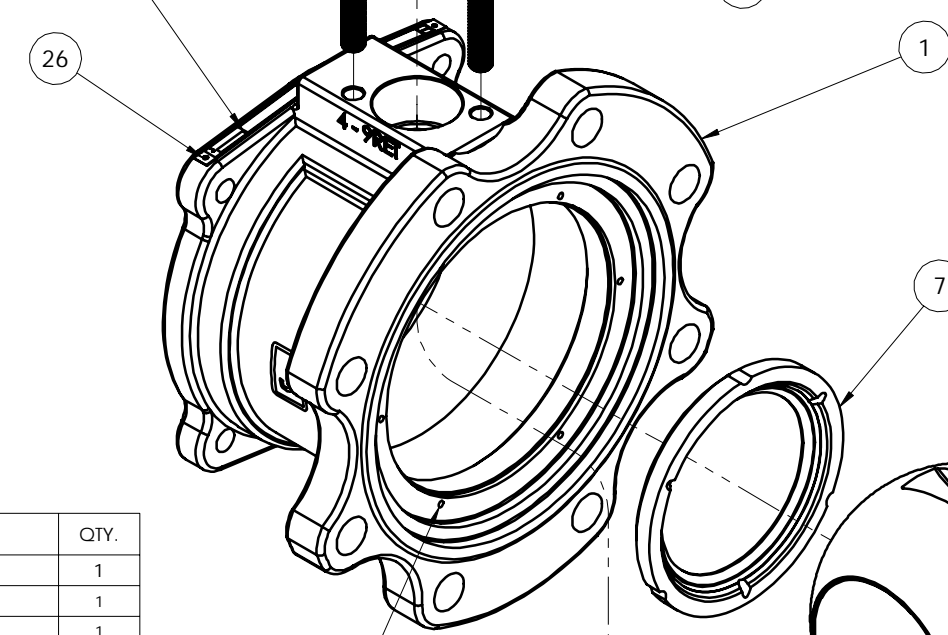
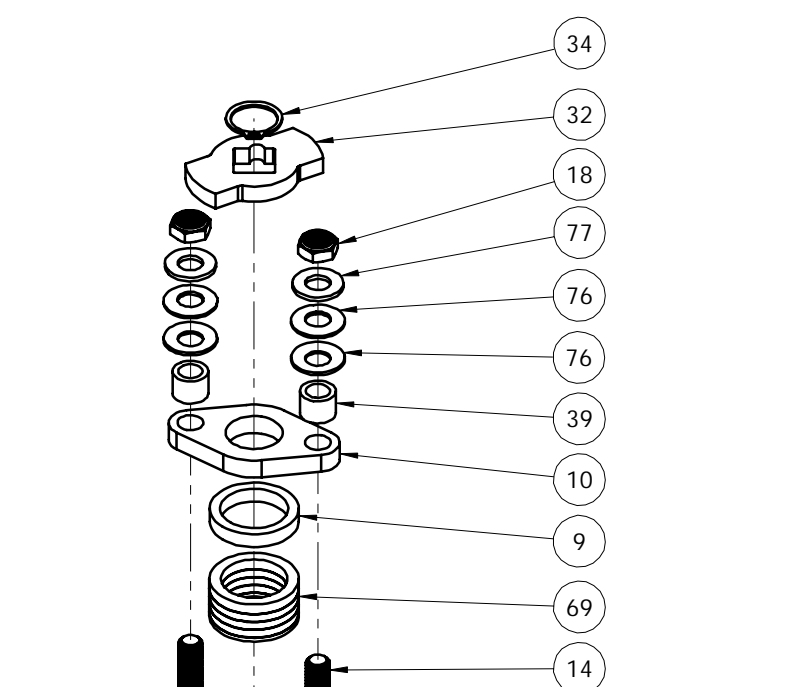
<small>THIS DRAWING AND ALL INFORMATION CONTAINED HEREIN ARE THE PROPERTY OF METSO AND ARE NOT TO BE USED EXCEPT AS AUTHORIZED IN WRITING BY METSO.</small> <small>UNLESS OTHERWISE NOTED DIMENSIONING, TOLERANCING, & DRAWING INTERPRETATION IS IN ACCORDANCE WITH ASME Y14.5M</small> <small>ANGLES = ±5° FINISH 250</small> <small>REMOVE SHARP EDGES AND CORNERS TO 0.2-0.3 RADIUS OR CHAMFER, DIMENSIONS IN INCHES.</small>	<small>SPECIFICATIONS TO BE USED IN CONJUNCTION WITH THIS DRAWING</small> JSA-01 JSA-10 JSA-17 JST-02 JMA-126	<small>MAKE FROM PART NO.</small> INTERNAL	<small>TITLE:</small> ASSEMBLY 4" 9RET3, 9RET4, 9RETS FULL PORT STANDARD PROFILE BOTTOM UNLOADING RAILROAD VALVE	<small>DRAWN</small> PJD	<small>DATE</small> 1/31/06
	<small>APPVD.</small> DRE	<small>DATE</small> 1/31/06	<small>SIZE</small> D	<small>DWG NO</small> 5475	<small>REV</small> M

© 2016 Metso

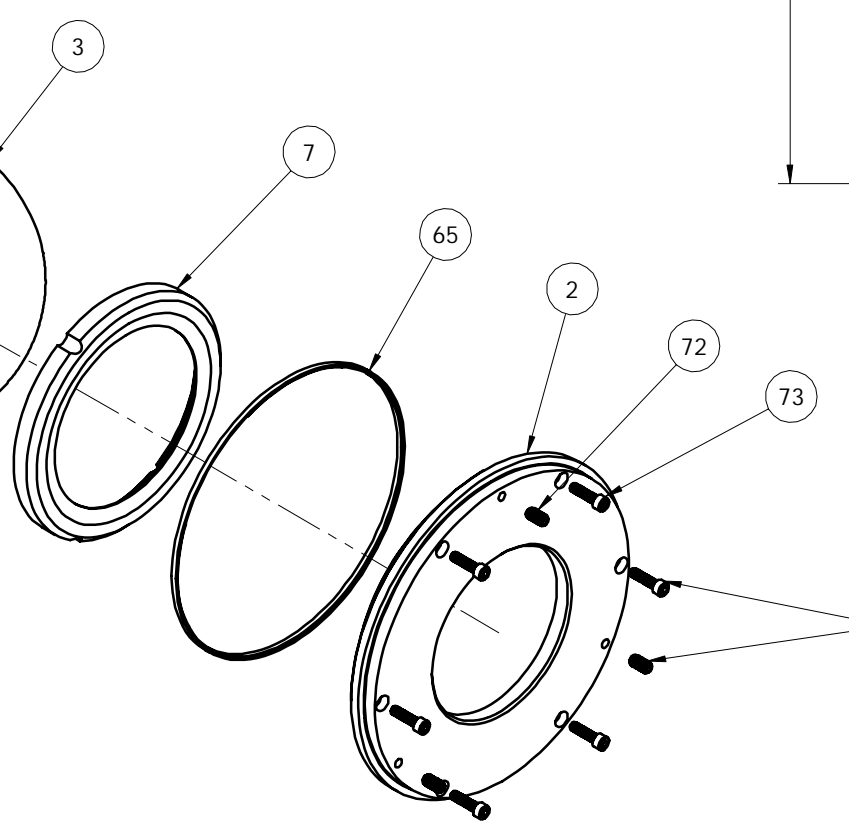
SHREWSBURY, MASSACHUSETTS

SHEET 1 OF 4

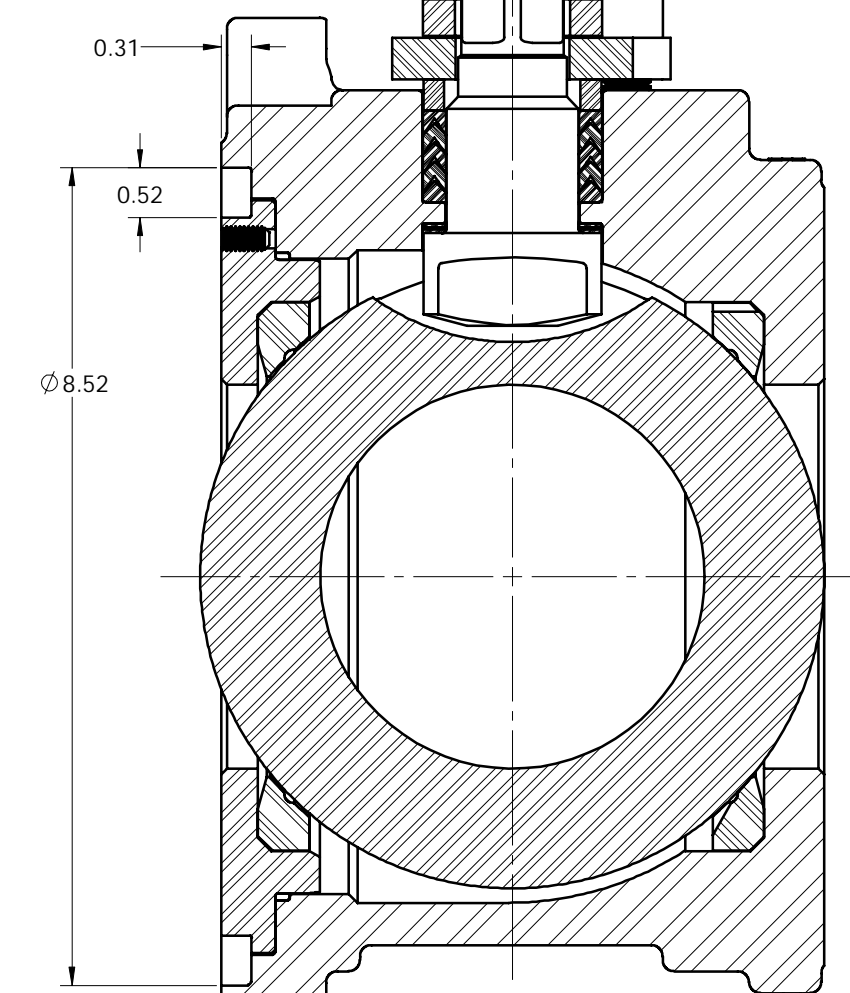
SEE NOTE 4



SEE NOTE 11 TYP.



SEE NOTE 11 TYP.

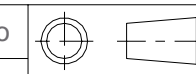


SECTION A-A

ITEM NO.	DESCRIPTION	QTY.
1	BODY	1
2	INSERT	1
3	BALL	1
5	STEM	1
7	SEAT	2
9	COMPRESSION RING	1
10	COMPRESSION PLATE	1
14	STUD	2
18	ESNA NUT	2
19	IDENTIFICATION TAG	1
26	POP RIVET	3
32	INDICATOR STOP	1
34	RETAINING RING	1
39	STOP SLEEVE	2
65	BODY SEAL	1
69	STEM SEAL	1
70	STEM BEARING	2
71	SECONDARY STEM SEAL	1
72	SET SCREW	3
73	SOCKET HEAD CAP SCREW	6
76	DISC SPRING	4
77	FLAT WASHER	2

STEAM JACKET NOT SHOWN

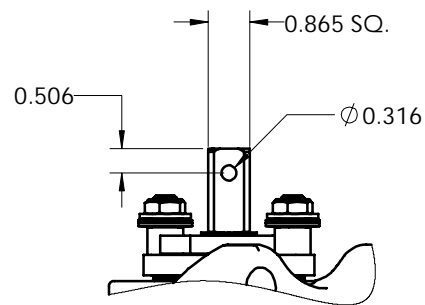
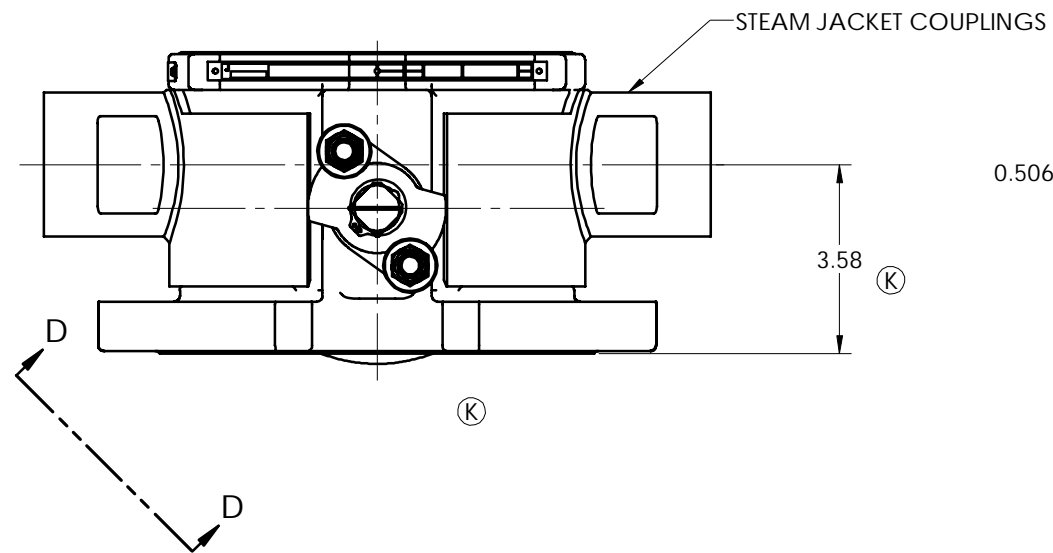
© 2016 Metso



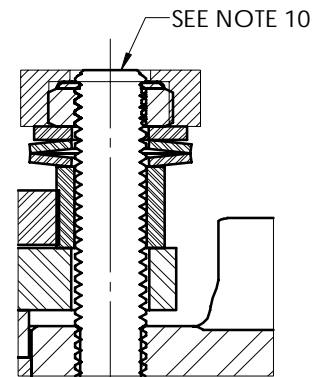
THIS DRAWING AND ALL INFORMATION CONTAINED HEREIN ARE THE PROPERTY OF METSO AND ARE NOT TO BE USED EXCEPT AS AUTHORIZED IN WRITING BY METSO.
 UNLESS OTHERWISE NOTED DIMENSIONING, TOLERANCING, & DRAWING INTERPRETATION IS IN ACCORDANCE WITH ASME Y14.5M
 ANGLES = ±5° FINISH REMOVE SHARP EDGES AND CORNERS TO 0.2 - 0.3 RADIUS OR CHAMFER, DIMENSIONS IN INCHES.

SPECIFICATIONS TO BE USED IN CONJUNCTION WITH THIS DRAWING		MAKE FROM PART NO.	INTERNAL	
JSA-01	JSA-10	JSA-17	JST-02	JMA-126
TITLE: ASSEMBLY 4" 9RET3, 9RET4, 9RETS FULL PORT STANDARD PROFILE BOTTOM UNLOADING RAILROAD VALVE			DRAWN	DATE
			PJD	1/31/06
			APPVD.	DATE
			DRE	1/31/06
SIZE	DWG NO.	REV		
D	5475	M		

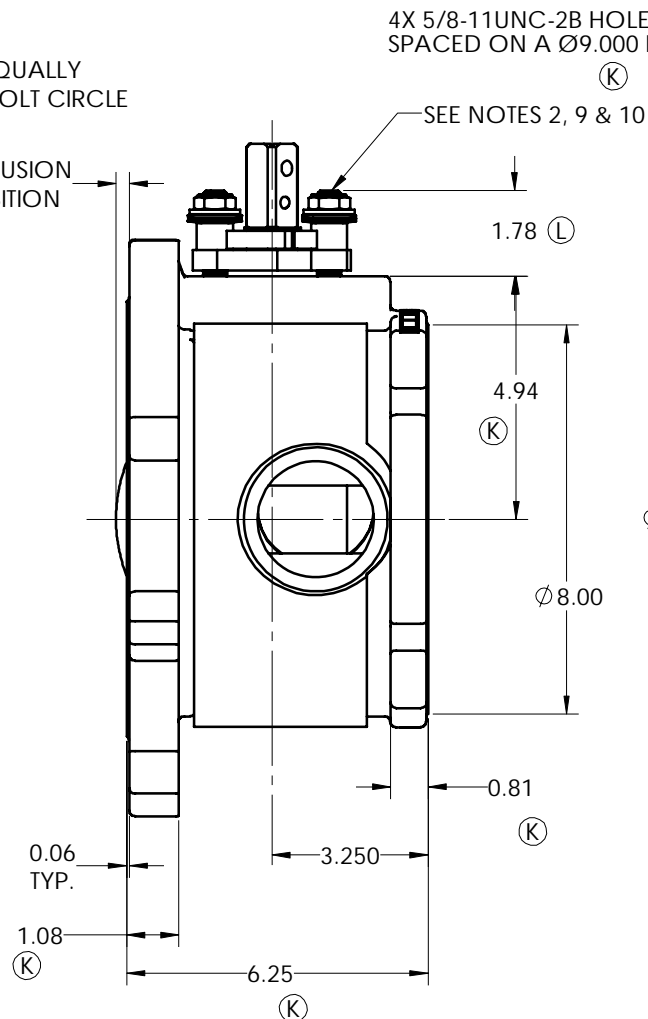
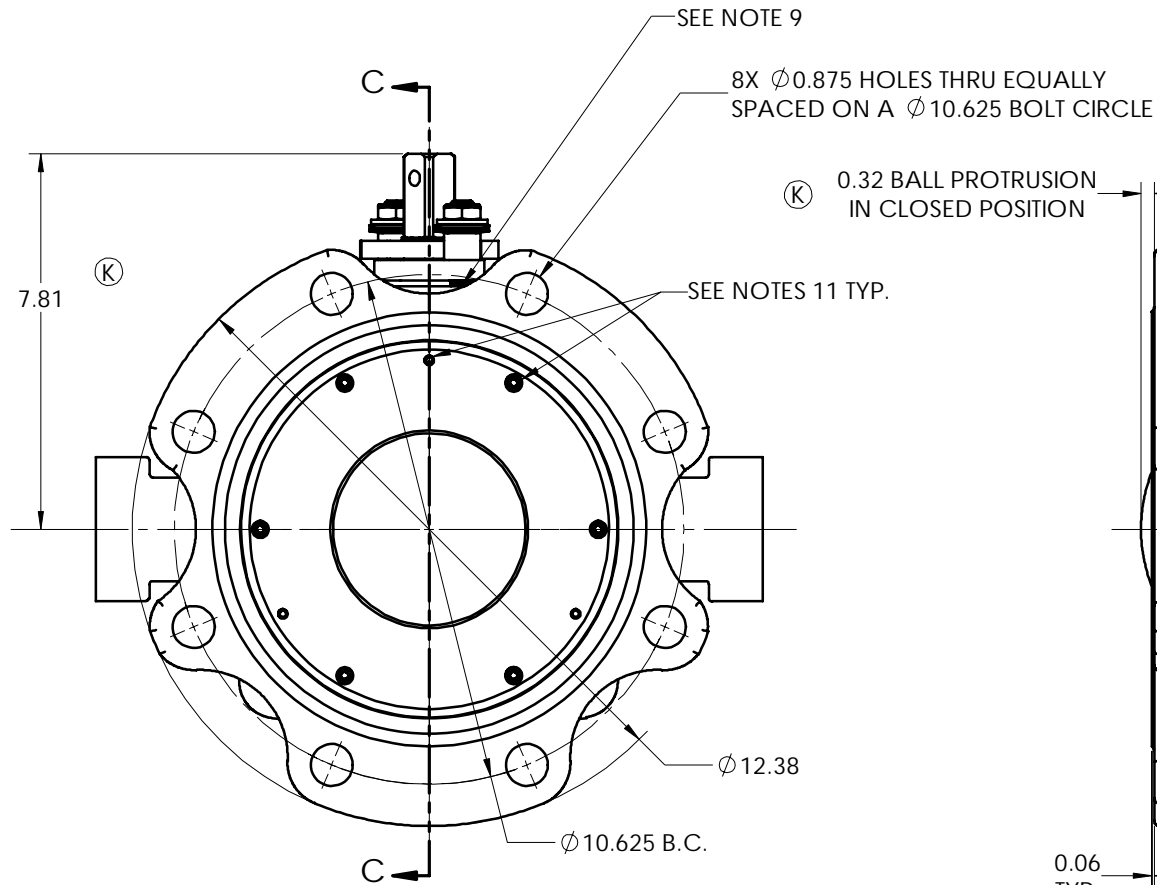
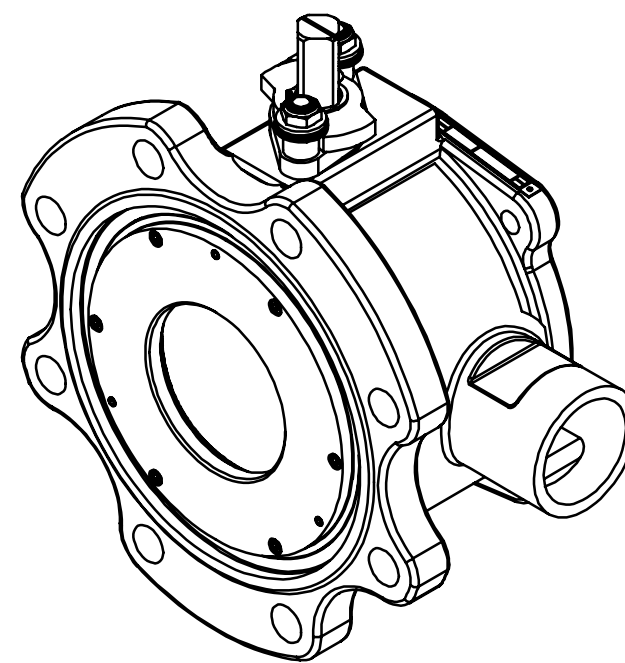




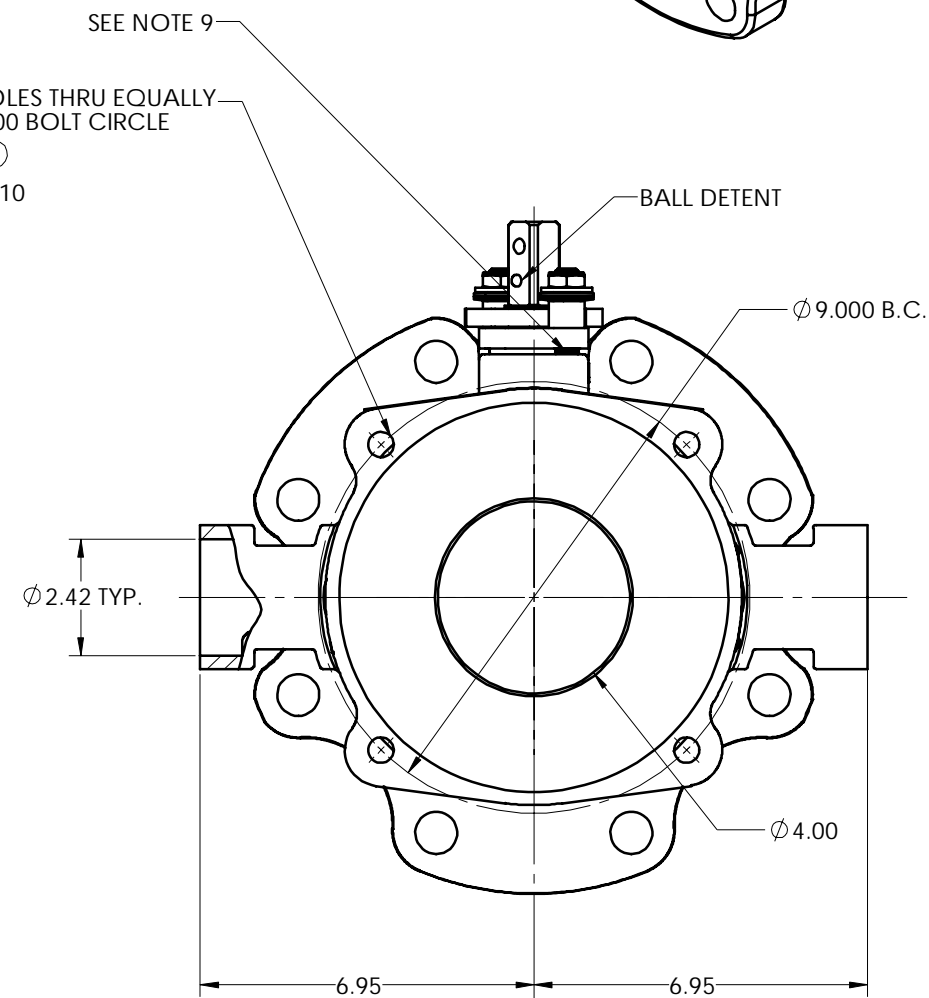
AUXILIARY D



REQUIRED FASTENER TORQUE
INSERT CAP SCREW
23 IN.-LBS.

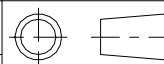


WITH STEAM JACKET



<small>THIS DRAWING AND ALL INFORMATION CONTAINED HEREIN ARE THE PROPERTY OF METSO AND ARE NOT TO BE USED EXCEPT AS AUTHORIZED IN WRITING BY METSO.</small> <small>UNLESS OTHERWISE NOTED DIMENSIONING, TOLERANCING, & DRAWING INTERPRETATION IS IN ACCORDANCE WITH ASME Y14.5M</small> <small>ANGLES = $\pm 5^\circ$ FINISH $\sqrt{250}$ REMOVE SHARP EDGES AND CORNERS TO 0.2 - 0.3 RADIUS OR CHAMFER, DIMENSIONS IN INCHES.</small>	<small>SPECIFICATIONS TO BE USED IN CONJUNCTION WITH THIS DRAWING</small> JSA-01 JSA-10 JSA-17 JST-02 JMA-126	<small>MAKE FROM PART NO.</small> INTERNAL	<small>TITLE:</small> ASSEMBLY 4" 9RET3, 9RET4, 9RETS FULL PORT STANDARD PROFILE BOTTOM UNLOADING RAILROAD VALVE	<small>DRAWN</small> PJD <small>DATE</small> 1/31/06
	<small>REV</small> M	<small>APPVD</small> DRE <small>DATE</small> 1/31/06	<small>SIZE</small> D <small>DWG NO</small> 5475	<small>REV</small> M

© 2016 Metso



metso
SHREWSBURY, MASSACHUSETTS

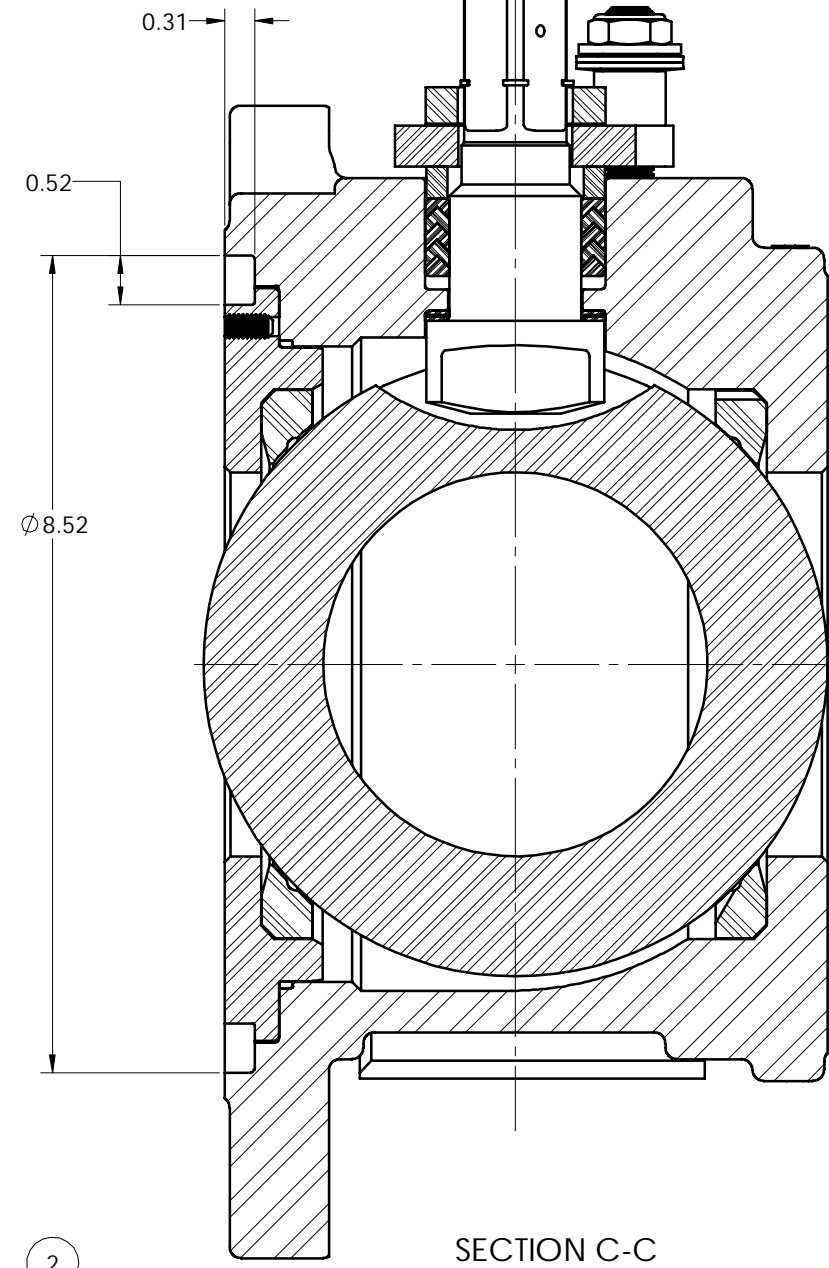
SEE NOTE 4

SEE NOTE 11 TYP.

SEE NOTE 11 TYP.

ITEM NO.	DESCRIPTION	QTY.
1	BODY	1
2	INSERT	1
3	BALL	1
5	STEM	1
7	SEAT	2
9	COMPRESSION RING	1
10	COMPRESSION PLATE	1
14	STUD	2
18	ESNA NUT	2
19	IDENTIFICATION TAG	1
26	POP RIVET	5
32	INDICATOR STOP	1
34	RETAINING RING	1
39	STOP SLEEVE	2
65	BODY SEAL	1
69	STEM SEAL	1
70	STEM BEARING	2
71	SECONDARY STEM SEAL	1
72	SET SCREW	3
73	SOCKET HEAD CAP SCREW	6
76	DISC SPRING	4
77	FLAT WASHER	2
78	STEAM JACKET RATING TAG	1

WITH STEAM JACKET



<small>THIS DRAWING AND ALL INFORMATION CONTAINED HEREIN ARE THE PROPERTY OF METSO AND ARE NOT TO BE USED EXCEPT AS AUTHORIZED IN WRITING BY METSO.</small> <small>UNLESS OTHERWISE NOTED DIMENSIONING, TOLERANCING, & DRAWING INTERPRETATION IS IN ACCORDANCE WITH ASME Y14.5M</small> <small>ANGLES = ±5° FINISH 250 REMOVE SHARP EDGES AND CORNERS TO 02 - 03 RADIUS OR CHAMFER, DIMENSIONS IN INCHES.</small>	<small>SPECIFICATIONS TO BE USED IN CONJUNCTION WITH THIS DRAWING</small> JSA-01 JSA-10 JSA-17 JST-02 JMA-126	<small>MAKE FROM PART NO.</small> INTERNAL	<small>TITLE:</small> ASSEMBLY 4" 9RET3, 9RET4, 9RETS FULL PORT STANDARD PROFILE BOTTOM UNLOADING RAILROAD VALVE	<small>DRAWN</small> PJD <small>DATE</small> 1/31/06 <small>APPVD</small> DRE <small>DATE</small> 1/31/06
	<small>© 2016 Metso</small>	<small>SIZE</small> D <small>DWG NO</small> 5475 <small>REV</small> M		<small>SHREWSBURY, MASSACHUSETTS</small>